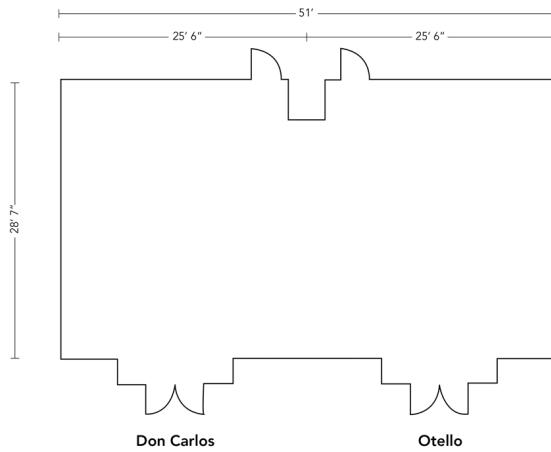




## DON CARLOS & OTELLO

The Don Carlos and Otello rooms offer an abundance of natural light combined with the versatility to be used as individual meeting rooms or as one large meeting space. Our ergonomic chairs and tables can be set up in a variety of configurations based on your meeting requirements.

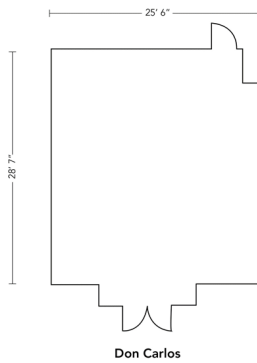
### DON CARLOS/OTELLO



### ROOM DON CARLOS & OTELLO

Size	28.7'x51'
Height	8'
Footage	1470
U-Shape	36
Rounds of 6	48
Boardroom	34
Classroom	48
Theatre & Reception	100/80
Dinner	80

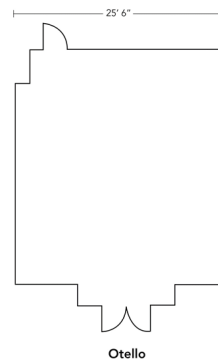
### DON CARLOS



### ROOM DON CARLOS

Size	28.7'x25.6
Height	8'
Footage	735
U-Shape	20
Rounds of 6	30
Boardroom	18
Classroom	24
Theatre & Reception	50/40
Dinner	40

### OTELLO



### ROOM OTELLO

Size	28.7'x25.6
Height	8'
Footage	735
U-Shape	20
Rounds of 6	30
Boardroom	18
Classroom	24
Theatre & Reception	50/40
Dinner	40