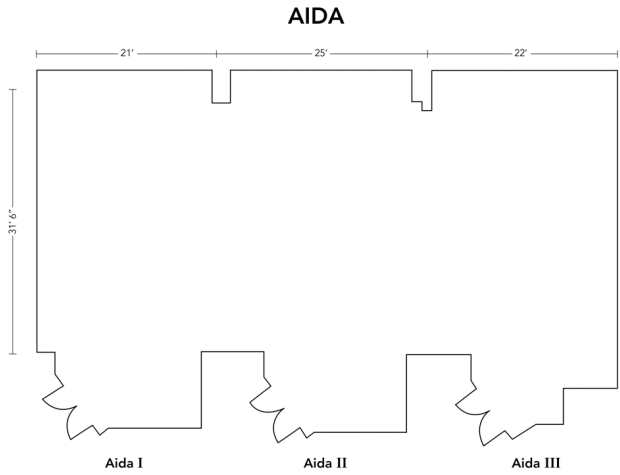




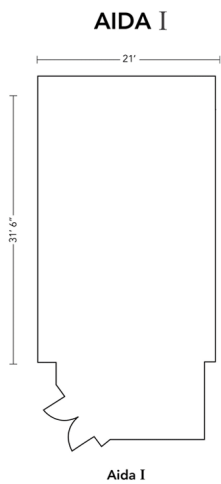
AIDA BALLROOM

The bright and elegant Aida Ballroom, located on the ground level, provides flexible meeting space and features garden doors that open on to a patio overlooking the pond and grounds of the resort. This room can be used as one large meeting room or three separate meeting spaces. The spacious foyer provides the perfect place to conduct your meeting registration or host refreshment breaks.



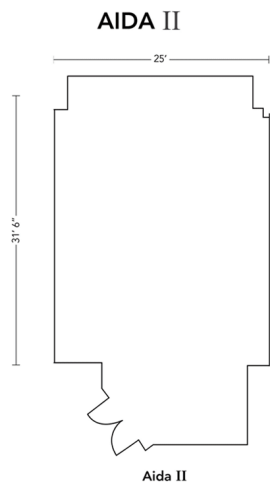
ROOM AIDA (ALL)

Size	31.6'x68'
Height	9'
Footage	2148
U-Shape	44
Rounds of 6	90
Boardroom	42
Classroom	64
Theatre & Reception	180/150
Dinner	140



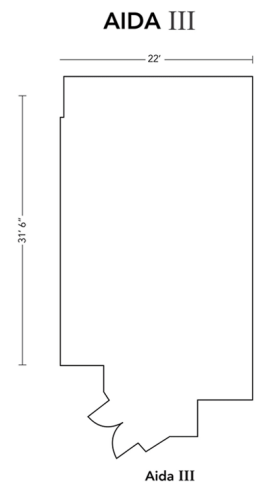
ROOM AIDA (I)

Size	31.6'x21'
Height	9'
Footage	663
U-Shape	20
Rounds of 6	24
Boardroom	18
Classroom	24
Theatre & Reception	50/40
Dinner	40



ROOM AIDA (II)

Size	31.6'x25'
Height	9'
Footage	790
U-Shape	20
Rounds of 6	24
Boardroom	18
Classroom	24
Theatre & Reception	50/40
Dinner	40



ROOM AIDA (III)

Size	31.6'x22'
Height	9'
Footage	695
U-Shape	20
Rounds of 6	24
Boardroom	18
Classroom	24
Theatre & Reception	50/40
Dinner	40